



GMT MONTHLY MEMBERSHIP PROGRESS REPORT

Results as of: 11/30/2018

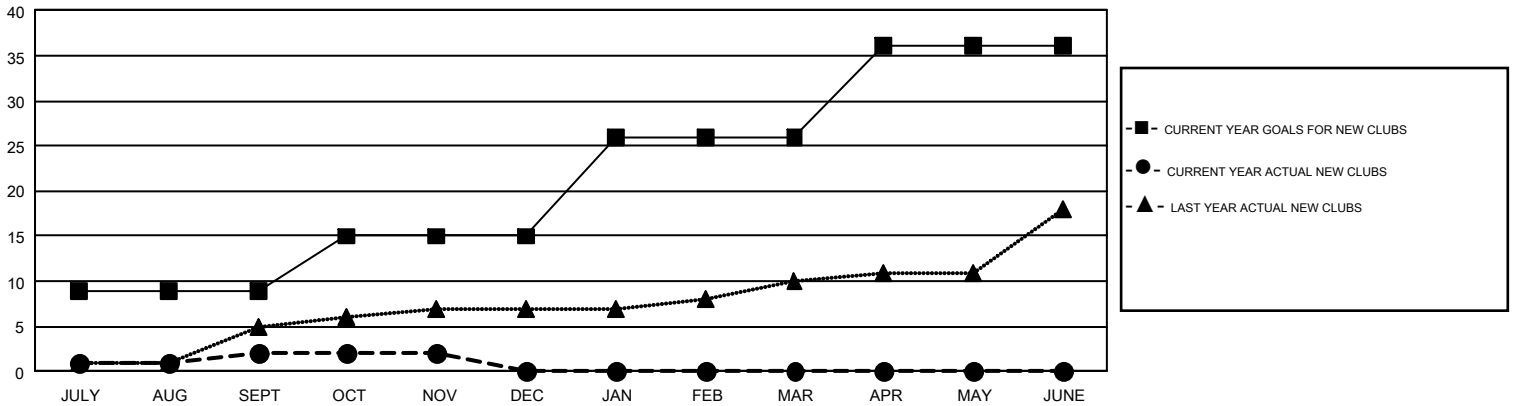
GMT Constitutional Area 1, Group B

GMT: CINDY GREGG

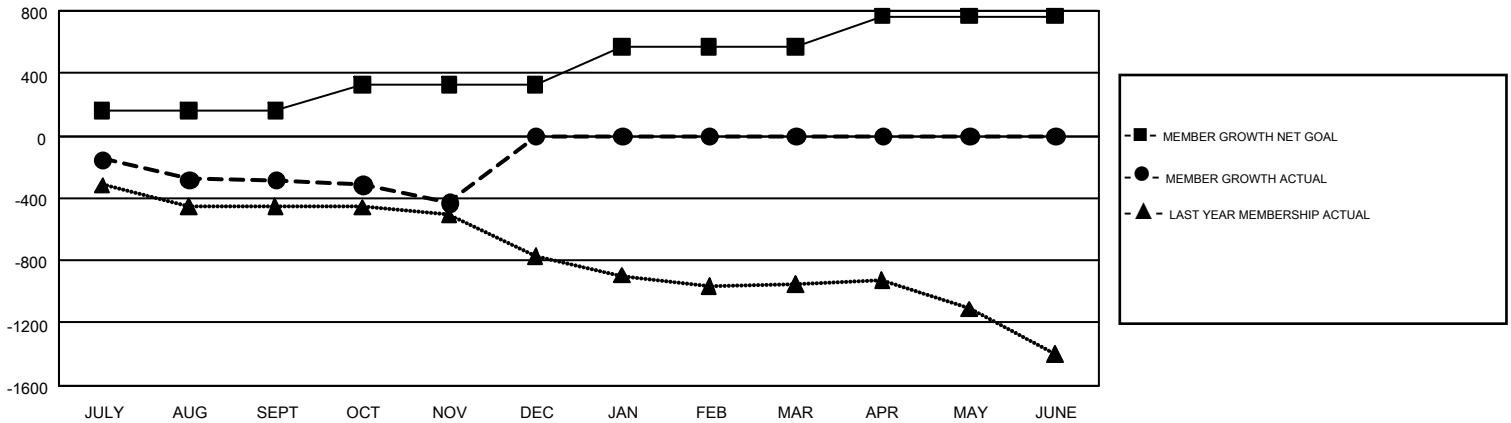
REPORT DOES NOT INCLUDE CLUBS IN UNDISTRICTED AREAS.

Clubs				Members			
RESULTS FOR 2018-2019				RESULTS FOR 2018-2019			
QUARTER	NEW CLUB GOAL	NEW CLUBS	DROPPED CLUBS	QUARTER	MEMBER GROWTH NET GOAL	MEMBER GROWTH ACTUAL	DROPPED MEMBERS ACTUAL (including transfers)
JULY/AUG/SEPT	9	2	13	JULY/AUG/SEPT	163	675	859
OCT/NOV/DEC	6	0	2	OCT/NOV/DEC	167	543	642
JAN/FEB/MAR	11	0	0	JAN/FEB/MAR	238	0	0
APR/MAY/JUNE	10	0	0	APR/MAY/JUNE	198	0	0

GOALS AND ACTUAL NEW CLUBS CUMULATIVE



GOALS AND ACTUAL MEMBERS CUMULATIVE



DROPPED CLUBS: 15	488 CLUBS OF 1,529 ADDED 1 OR MORE NEW MEMBERS	GENDER DISTRIBUTION MALE 29,001 (71.21%) FEMALE 11,725 (28.79%)
DROPPED MEMBERS DECEASED 288 CLUB CANCELLED 36 OTHER 1,177 <hr/> TOTAL 1,501	CLICK HERE FOR CUMULATIVE MEMBERSHIP DATA	TOTAL FAMILY UNIT MEMBERS 7,952 FAMILY MEMBERS PAYING HALF DUES 4,072